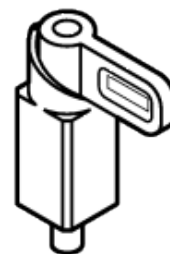
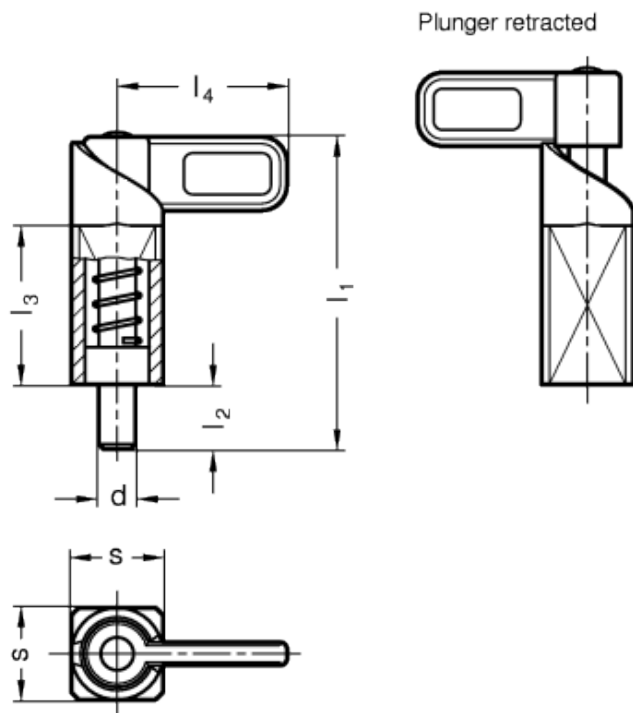
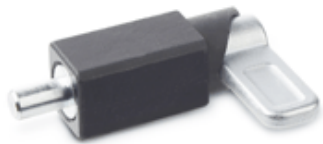


GN 722.1

Lever indexing plungers
with rest position



technical informations

Guide

Black-oxide steel precision cast, weldable.

Latch

Steel precision cast, zinc plated, blue passivated.

Plunger

Steel, zinc plated, blue passivated.
Suggested matching hole with tolerance +0.1/+0.3.

Features and applications

Spring latches GN 722.1 are used when the indexing pin is temporarily not allowed to protrude. The indexing pin retracts by turning the latch by 180°.

A lock notch will hold the latch in both positions.

The square bar allows the latch to be welded in any desired position. To prevent excessive heating up and the resulting change in the spring properties, fixing with welding spots is recommended.

Spring latches GN 722.1 are designed for use in steel construction or in locksmith shops where less precise positioning / locking is normally required. The dimensional tolerances are therefore chosen to ensure that functional safety is guaranteed under dirt exposure and that cost-effective production methods are used.

Standard Elements	Main dimensions						Spring pressure in N \approx		Weight
Description	^d -0.05/-0.25	s	l ₁ \approx	l ₂	l ₃	l ₄	Preload	Max. load	g
GN 722.1-8-20	8	20	68	14	35	37	16	55	120
GN 722.1-10-20	10	20	68	14	35	37	16	55	140
GN 722.1-12-20	12	20	68	14	35	37	16	55	145
GN 722.1-14-20	14	20	68	14	35	37	16	55	151



STANDARD MACHINE ELEMENTS WORLDWIDE